

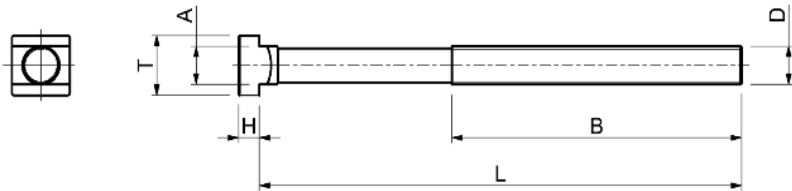
Viti testa a martello singole


Materiale: 42CrMoS4 Classe 10.9
Filetto ottenuto per rullatura

S311


Single hammerhead bolts

Material: 42CrMoS4 Class 10.9
Rolled thread



Code	D	L	B	A	T	H		gr
S311.10040	M10	40	30	9,7	15	6	10	30
S311.10060		63	45					50
S311.10080		80	55					55
S311.10100		100	60					70
S311.10125		125	75					75
S311.10150		150	100					90
S311.10170		170	100					100
S311.12050	M12	50	35	11,7	18	7	12	60
S311.12060		63	45					65
S311.12080		80	55					75
S311.12100		100	60					90
S311.12125		125	75					110
S311.12150		150	100					130
S311.12170		170	100					145
S311.12200		200	120					160
S311.14060	M14	63	40	13,7	22	8	14	80
S311.14080		80	55					100
S311.14100		100	65					135
S311.14125		125	75					160
S311.14150		150	100					190
S311.14170		170	100					210
S311.14200		200	125					235
S311.14230		230	150					265
S311.16060	M16	63	45	15,7	25	9	16	140
S311.16080		80	55					160
S311.16100		100	63					180
S311.16125		125	75					225
S311.16150		150	100					255
S311.16160		160	100					270
S311.16170		170	100					280
S311.16200		200	125					315
S311.16230		230	150					360
S311.16250		250	150					380

N.B. : Si eseguono su richiesta misure non a catalogo

Code	D	L	B	A	T	H		gr
S311.18080	M18	80	55	17,7	28	10	18	185
S311.18100		100	65					203
S311.18125		125	85					280
S311.18150		150	100					320
S311.18170		170	100					350
S311.18200		200	125					400
S311.18230		230	150					430
S311.20080	M20	80	55	19,7	32	12	20	290
S311.20100		100	63					340
S311.20125		125	85					390
S311.20150		150	100					450
S311.20160		160	110					470
S311.20170		170	100					475
S311.20200		200	125					550
S311.20230		230	150					670
S311.20315		315	190					800
S311.22080	M22	80	55	21,7	35	14	22	330
S311.22100		100	63					370
S311.22125		125	85					430
S311.22150		150	100					500
S311.22170		170	100					590
S311.22200		200	125					660
S311.22230		230	150					680
S311.24080	M24	80	55	23,7	40	16	24	450
S311.24100		100	70					550
S311.24125		125	85					600
S311.24150		150	100					710
S311.24160		160	110					740
S311.24170		170	100					770
S311.24200		200	125					900
S311.24230		230	150					935
S311.24250		250	150					995
S311.27160	M27	160	110	27,7	44	18	28	800
S311.27200		200	125					950
S311.27250		250	150					1120
S311.27315		315	240					1490

N.B. : Other sizes can be supplied on request

Su richiesta è disponibile la fornitura dell'attestato di controllo 2.2 e del certificato 3.1.B.
On demand it is available the supply of certificates 2.2 and 3.1.B.

